

The Safe Place Scheme



What is the Safe Place scheme?

The Safe Place Scheme was launched in Buckinghamshire in 2012, and has built a network of suitable venues and businesses such as local shops and libraries, where anyone can go for help and assistance if they find themselves in need whilst out and about in their local community. The scheme covers towns and villages in all of Buckinghamshire (except Milton Keynes).

Having access to a 'Safe Place' offers anyone vulnerable who is feeling confused, scared or upset, to have somewhere they can go to ask for help. They may simply need directions, or may wish to make a telephone call to someone they trust – either to collect them, or advise them on what they need to do.

Above all the scheme aims to provide reassurance, so that vulnerable people can lead independent lives and feel safe whilst out in Buckinghamshire.



How does the scheme work?

This sticker is displayed in the window of a business to identify the premises as a safe place.

A vulnerable person can go in, approach a member of staff and ask for assistance.

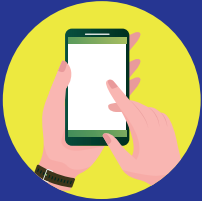


THAMES VALLEY
POLICE

Working together for a
safer Buckinghamshire

The role of a **Safe Place** business

If a vulnerable person seeks help, a member of staff would be expected to:



Make a phone call where necessary either to one of the numbers on the emergency contact list provided to the premise, or to their trusted person; they may have a Safe Place emergency contact card (please note you do not need a Safe Place emergency contact card to use the scheme).



Offer reassurance and keep the vulnerable person safe until the situation is resolved. This might include a quiet place to sit down or a glass of water.

How can a business get involved?

If you own or manage a business and would like to become a 'Safe Place' please contact the Buckinghamshire Council Community Safety Team via email at safeplace@buckinghamshire.gov.uk

How can I get a Safe Place Emergency Contact Card?

If you know of someone who would benefit from the scheme and would like more information or would like a card to carry around with their emergency contact details, please contact safeplace@buckinghamshire.gov.uk



For further information about the Safe Place scheme and the areas covered please scan the QR code.

Follow us for community safety updates and advice:



@Bucks_Safety



@BucksCommunitySafety